

Ballater Mobility Hub: Detailed Design & OBC

May 2025

Notes

- This slide deck provides an overview of progress with the Ballater Mobility Hub project as presented to Ballater & Crathie Community Council on 12th May 2025.
- The included drawings are conceptual and intended for discussion. They remain subject to further input from stakeholders and the community, ensuring that final designs reflect further engagement and feedback.
- No final decisions have been made, and community involvement will play a key role.

Agenda

- Study Scope
- Background
- Ballater Mobility Hub: The Benefits
- Recent Work – Concept Design and Public Consultation
- Study Tour, April 2025
- Alternative Coach Parking – Potential Options



Presentation given at Ballater & Crathie Community Council on 12th May 2025

Study Scope

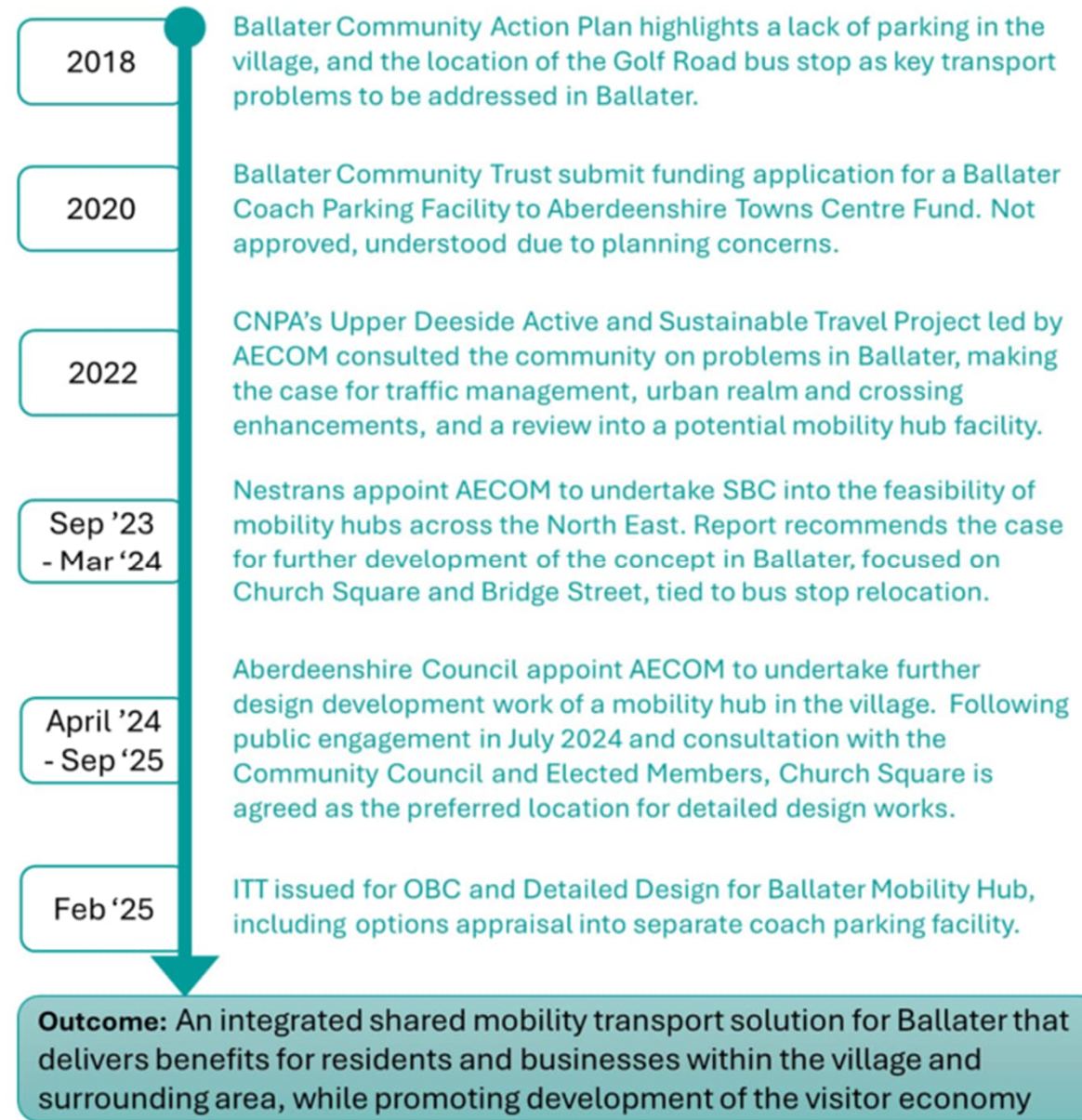
- To develop a detailed design and Outline Business Case (OBC) for a scheme that delivers on the objectives of the project.
- Client Group: Nestrans, Aberdeenshire Council and the CNPA
- Detailed Design to be focused on Church Square
- OBC to be in line with Transport Scotland guidance (5-case model)
- Interdependency: Feasibility assessment and outline design required for additional coach parking facility

Outcomes Sought

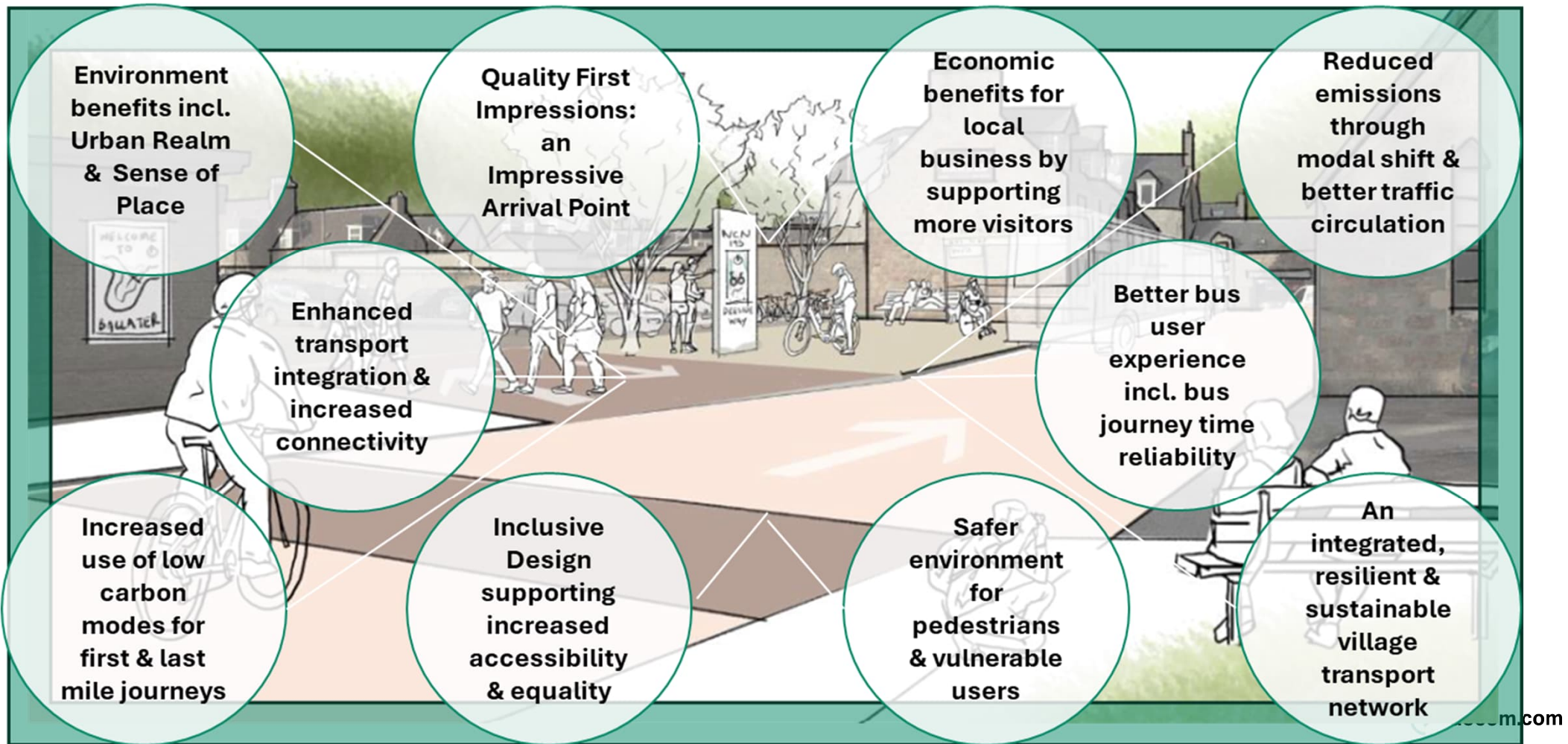
- Improve connectivity through the integration of transportation options and other services.
- Integrate shared mobility to complement the existing transport network.
- Promote inclusivity and follow design standards for disabled people or those with mobility or sensory impairments.
- Improve accessibility for those with limited transport choice or no access to a car.
- Support people to make informed travel choices through integration and provision of information.
- Support low carbon choices and reduction of emission
- Increase use of shared mobility as an alternative to the private car and facilitate a shift to more sustainable and active modes to reduce car ownership
- Encourage behavioural change and facilitate a modal shift to more sustainable modes of transport.
- Ensure safety and security for people using the hub.
- Create a sense of place and community and reallocate space in the public realm through placemaking and effective land use

Background

- Respond and accommodate the bus stop relocation
- Compact size lends itself to active travel
- Tourism centre for Royal Deeside
- Located in both Aberdeenshire Council area and Cairngorms National Park
- Destination point of the NCN Route 195 (Deeside Way)
- Proposals must reflect the design guidance and heritage designations
- Station Square acts as a high-quality precedent for the public realm
- Proactive and engaged Community



Ballater Mobility Hub: The Benefits



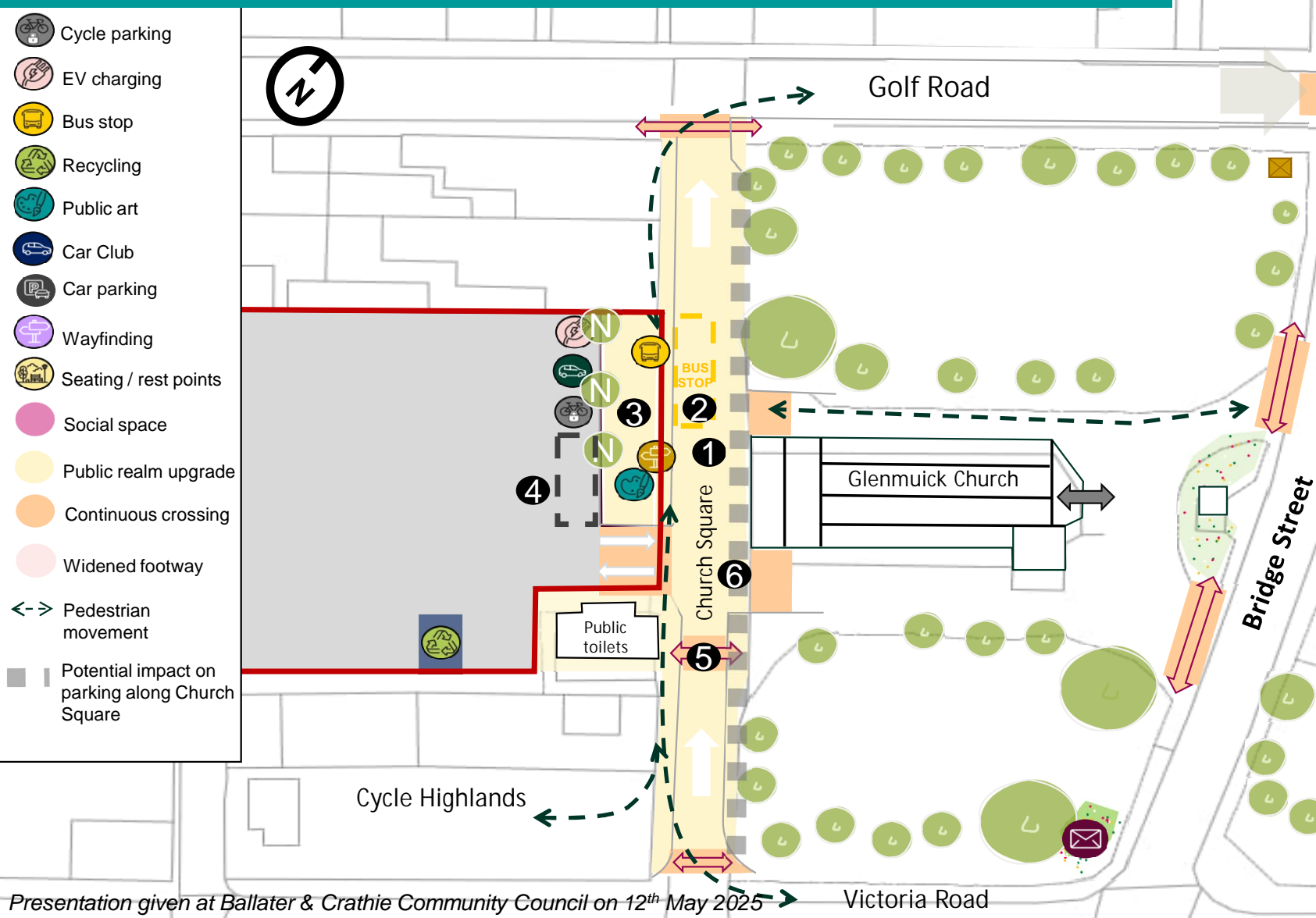
Recent Work – Concept Design and Public Consultation



Engagement in July 2024

- Strong support for bus stop relocation from Golf Road
- Majority of attendees indicated a preference for Church Square
- Identified problems and opportunities, including long stay parking issues, improving public realm and accessibility. Potential features – maps, charging facilities, improved bus shelter, parcel lockers

Indicative Church Square Mobility Hub



Presentation given at Ballater & Crathie Community Council on 12th May 2025

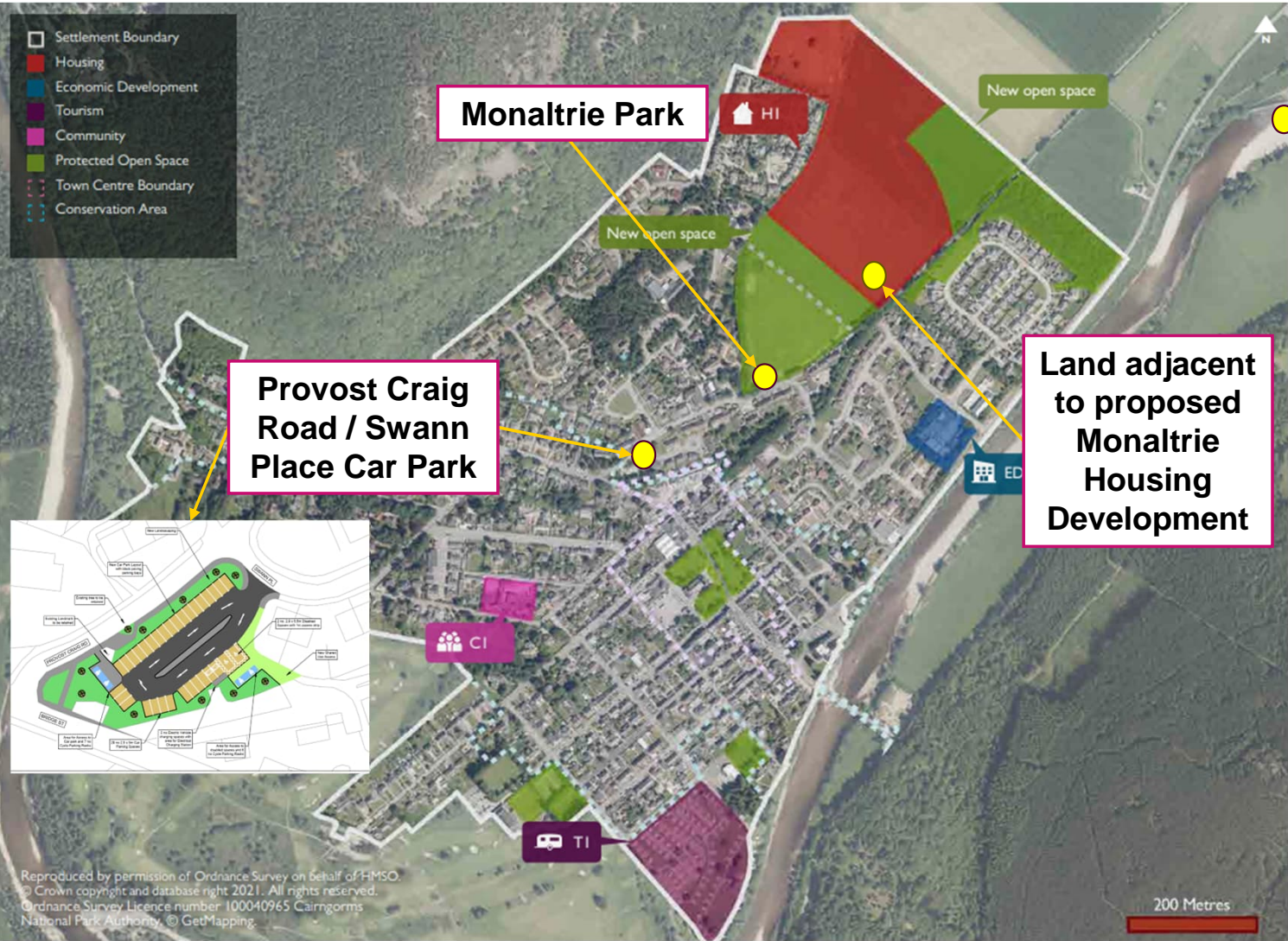
1. Adopt a one-way system along Church Square, with wider footways and carriageway resurfacing.
2. Relocate the bus stop on the west side of Church Square. (There are several potential layouts that this could take).
3. Use some of the Church Square Car Park to support a bus stop and mobility hub area with facilities like wayfinding, promotion of the NCN, public art, EV charging, a bus shelter and cycle parking.
4. Retain disabled parking bays close to the car park entrance / exit.
5. Continuous crossings for pedestrians at each end of Church Square.
6. The existing informal parking bays along Church Square may be affected by the one-way proposals.

Study Tour, April 2025



Presentation given at Ballater & Crathie Community Council on 12th May 2025

Alternative Coach Parking - Potential Options



Distance & Journey Times to Village Centre

	A93	Monaltrie Park	Swann Place
Distance (miles)	0.9	0.4	0.2
Walking (mins)	20	10	5
Cycling (mins)	5	3	2
Driving (mins)	2	2	2

Note: Further coach parking site options are also being explored, including through engagement with stakeholders.

AECOM

AoB

Delivering a better world

 aecom.com